



# OAST POST

## OAST QUILTERS NEWSLETTER

Volume 20

[www.oastquilters.co.uk](http://www.oastquilters.co.uk)

Number 6 - December 2018

### TODAY'S MEETING

is

### THE ANNUAL GENERAL MEETING

There will be mince pies and tea afterwards

Thank you to today's Hostesses:

**Jo Blox and Pogles Wood**

Today's Traders are:

**Lina Patchwork and Purple Pixie**

### AGM AGENDA

1. Apologies for Officers' Absence
2. Minutes of the 2017 AGM
3. Matters arising from the Minutes
4. Chairman's Report
5. Treasurer's Report
6. Appointment of New Treasurer
7. Appointment of New Vice Chairman
8. Programme Secretary's Report
9. Young Oast Co-ordinator's Report
10. Website Co-ordinator's Report
11. Facebook Co-ordinator's Report
12. Quilters' Guild Area Representatives' Report
13. Bursary Awards
14. Any Other Business
15. Date of Next AGM

We hope you will enjoy the afternoon – and the tea after the meeting. Wishing you a peaceful and happy Christmas and New Year.

Oast Committee

### Young Oast

The Young Oast group had a very happy day on the 17 November making Christmas bunting and a Christmas tree decoration. After lunch Christine gave all the children a Christmas stocking which had a beautifully embroidered pin cushion she had designed and made, a pair of scissors and a seam ripper (essential items for a quilter!) and a fat quarter of fabric. A big thank you Christine for all your hard work this past year and we are looking forward to lots of new projects next year.



Dates for next year's Young Quilters are:  
2 February, 16 March, 18 May, 29 June, 28 September and 16 November 2019  
For further details please contact Christine Duke on 01797 363948



### A Polite request

If you have to leave the meeting early, please go quietly. Thank you.



### The 2018 Challenge

The entries for this year's challenge are displayed at the side of the hall. Please make sure that you vote for your favourite entry. Prizes are given to the first three and, of course, the winner gets to choose next year's challenge, which will be fabric-based.

### **The next meeting will be 'Corners'**

**January 26 2018**

Here is a provisional list, to whet your appetite, of what is on offer at this very popular meeting.

Ice Dyeing – Chris Whitney

Inktense Pencils – Sue Jennings

Fabric Painting – Sylvie Plested

Gillian Travis Applique – Judi Kirk

Mug Bags – Tracy Aplin/Sandra James

Log Cabin Star – Mary Cunningsworth

TBC Something interesting – Louise Jessop

Sewing hints and tips – Marion Fox

*You can make up to four choices. You collect tickets of your choices in four different colours which indicate the order in which you go to each corner.*

### January Workshop

Rosie James – Stitch Draw

Sunday 27 January at Lower Haldes CT4 5NP

Monday 28 January at Littlebourne CT3 1ST

If people who are already booked for the Sunday would like to change to Monday, they should email [oastrworkshops@gmail.com](mailto:oastrworkshops@gmail.com).

### Library

Between this and the next meeting the library team will be doing a complete audit and re-cataloguing all the books currently available. Please speak one of the library ladies if you have forgotten to return your library books today as requested.

To aid the transportation of the library to each meeting, groups or individuals are invited to make a book bag, a pattern for which will be available at the January meeting.



Thank you all for your contributions over the past couple of months. We made our target of 120 quilts for the Young Carers Festival last October. We also delivered 158 incubator quilts to William Harvey Hospital Special Care Baby Unit as well as a supply of laundry bags. They were thrilled with our donations and asked us to keep on stitching as their need is great.

At the moment we need quilts for older children. Lap quilts or single bed quilts would be excellent, but don't worry if your quilts are somewhere in between, any size up to a single bed is good. If you would rather knit, then please do as cannula mits and orange premature baby hats are always well received. One metre square lap quilts are also very useful for children in wheelchairs.

All of the organisations we support are very thankful for all items we donate.

### **Project Linus Theme for the Festival of Quilts 2019**



Most children love to have bright colours in their quilts. Our theme for 2019 is to make a quilt of any style but using ONLY red, blue and yellow. The size of the quilt should be 36" - 42" square.

The finished quilt, or quilt top, can be given to your Area Coordinator or, if preferred, handed over at the Festival of Quilts 2019 which will take place from 1 to 4 August 2019 at the NEC Birmingham.

Please note that the quilt depicted is only an example, you can use your own creativity to make a stylish, fun, child's quilt.

Pam Sawyer

Project Linus Area Coordinator South East Kent

[pam.its.only.me@hotmail.co.uk](mailto:pam.its.only.me@hotmail.co.uk)

07557886997

### For Sale

Janome New Home My Excel 23x Computer Equipped Sewing Machine (one of the original Janome's) - complete with accessories including walking foot. Recently serviced. £100 ono.

Elna 6004 Sewing Machine complete with accessories including walking foot. Recently serviced. £100 ono.

Monica Beale 01304 363201 or Mobile 07986 217628

### Janome Memory Craft 6600P Sewing Machine

This machine has many features including Acufeed layered fabric feeding system, extra wide bed, knee lift & extension table. There are lots of extras (see photo). It comes with a soft dust cover and weighs 12 kg.

£450



I have the machine with me, if interested, see Linda Lewis or email [linlew@hotmail.co.uk](mailto:linlew@hotmail.co.uk)

### Region 2 Quilters' Guild Birthday Party

Many thanks go to Tansy and team for a lovely day at the QG party. Stephanie Bunt patiently guided us through the instructions for the stand-up pencil cases. After lunch local quilter Inger Milburn gave an amazing Masterclass on log cabin variations and the Show and Tell was a collection of old and new quilts with stories attached. Finally we all enjoyed birthday cake baked by Cilla and went home happy with a raffle prize each.



### Bursaries

If you are eligible for a bursary please ensure that you collect a raffle ticket. The draw is for three bursaries of £100.00. If you are a lucky winner, you should spend the money on something which will extend your abilities in patchwork and sewing. You will be expected to give a short talk and/or demonstration on the technique you learnt at the meeting in March 2020.

### Gillian Travis Workshop Quilt

Janet Bevan has finished her Gillian Travis quilt, from the July workshop, which was led by Judi Kirk. She has cleverly kept the quilting simple with straight lines. Well Done!



### Oast at the Shows

A request...If you know of an Oast members quilt that is going to be displayed at a show, and they are happy for the quilt to be posted on Facebook, the website and in Oast Post, please would you send a jpeg photo and the label information to the following people:

[oastposteditor@gmail.com](mailto:oastposteditor@gmail.com)

[chris.whitney25@me.com](mailto:chris.whitney25@me.com)

[tansy17@icloud.com](mailto:tansy17@icloud.com)

### DATES FOR YOUR DIARY



### The next Committee Meeting

will be on Monday 14 January at 7.00pm at the Thanington Neighbourhood Resource Centre CT1 3XE.

### Spring Quilt Festival

25-27 January 2019

South of England Showground, Ardingly, RH17 6TL

10.00am – 4.00pm

### Doughty's Road Show

Sunday 15 May 10.00am - 2.00pm

Petham Village Hall, CT4 5RD

Free entrance, Refreshments available

Please bring your friends

### UFO Days in 2019

There will be two UFO days and the dates are 23 February and 23 November 2019, both will be held at Lower Harges Village Hall CT4 5NP

For further information please contact Ingrid Hudson on 01303 230117 or email: [raffles.leoville@btinternet.com](mailto:raffles.leoville@btinternet.com)

### Ethelburga Quilters

Ethelburga Quilters meets, usually on the second Saturday of each month, at Etchinghill Village Hall. The format is a taught workshop which is suitable for beginners and experienced quilters alike. We meet from 10.00am – 4.00pm. Refreshments are provided but you need to bring a packed lunch. The cost is £10.00 per session and there is no annual fee. We currently have a few vacancies and if you are interested, please see the programme for 2019 which is on the members' board.

### Christmas Stamps

Christine Duke (Young Oast Organiser) asks again if you would save all the Christmas stamps you receive this year. Christine sends them to CLAPA (Cleft Lip and Palate Association) as part of their fund raising activities. In fact if you are able, please save your used stamps all year as they can be sent to CLAPA at any time of the year. Thank you.



### Oast Showcase 2020

The Showcase will take place in 2020. If you would like to be involved in any way, no matter how small, speak to Liz Coleman who will be delighted to utilise your offer.

The challenge for the Showcase is 'Twenty-twenty', which is 20"x20". Any quilt of three layers but no larger than 20 inches square. More details will follow in the coming months.

### Facebook



The Oast Quilters Facebook group currently has 134 members and is a popular way of sharing information. It is a closed group and only open to members of Oast Quilters. Please do not recommend it to non-members of Oast as they will not be able to join the group until they have become a member of Oast Quilters.

### Young Quilters

Request donations of fabric, wadding or thread. So if you are having a sort through your stash, please consider donating to this very keen group of young quilters. Please give your donations to Christine Duke. Thank you.

### Workshop Hostesses

We are in need of a couple of friends to share the duties of hostessing at the workshops. Please speak to Liz Coleman if you may be able to help. Thank you



### Anni Albers Exhibition at Tate Modern

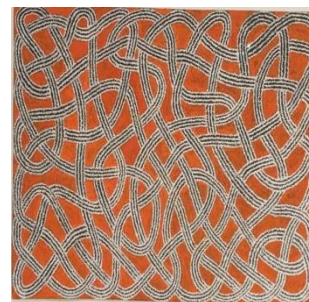
**Until 27 January 2019**

After my last birthday I treated myself to a membership of the Tate. Himself can come as my 'plus one'! The chief impetus for this was the current Anni Albers exhibition at Tate Modern. It is



the first major exhibition of her work in the UK, which is a long-overdue recognition of the importance of her work to modern art – even though some may say weaving is a mere craft – or 'women's work'. I was first alerted to the patchwork style of some of her work at the Turner Contemporary, where I saw one of the versions of 'Black White Yellow', designed in 1926 and re-woven in 1965.

Anni Albers was a student at the radical



Bauhaus art school, where she was discouraged from taking up certain (male-orientated) classes. So instead she made textiles her key form of expression. Her teacher and a source of inspiration was Paul

Klee. She also gained a lot of support from her husband, Josef Albers.

Of significant interest was the design processes she went through and there were water-colour initial designs to pour over, many of which were never apparently woven.



She also designed some architectural textiles; for instance for an auditorium, the fabric being metallic in appearance to reflect the artificial light and also having a sound-insulating quality. At an extreme, she designed woven pieces for room dividing which incorporated wooden slats. The patchwork-style weavings were, of course, particularly appealing!

See [www.tate.org.uk](http://www.tate.org.uk) for more information. Non members should pre-book tickets (£16.00)

Liz Coleman

**Merry Christmas and a Happy Quilty  
New Year to all Oast Members!**